

## RDP Deployment Map

Last updated by: Jesse Wheeler  
Last updated on: Aug 20, 2019 9:05 PM

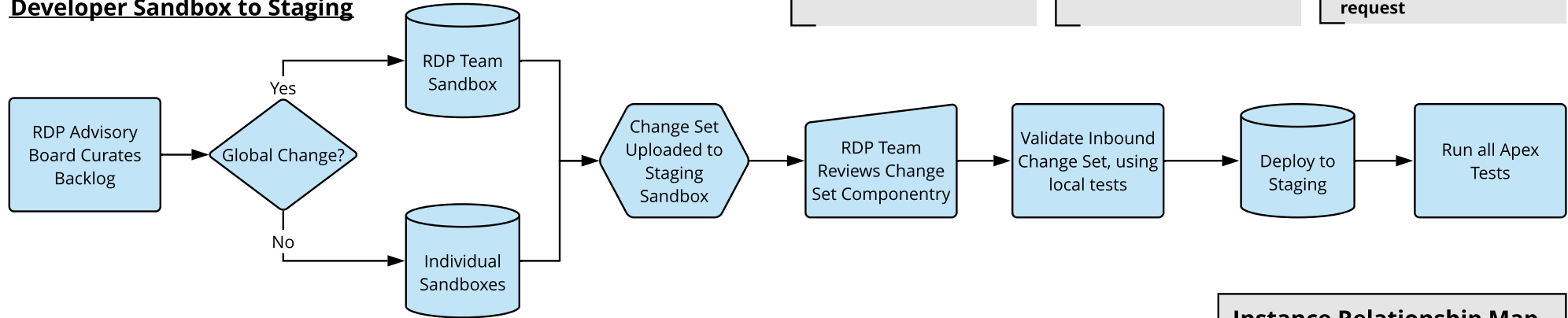
### Important Notes

Change Sets are validated and deployed bi-weekly from Staging into Production

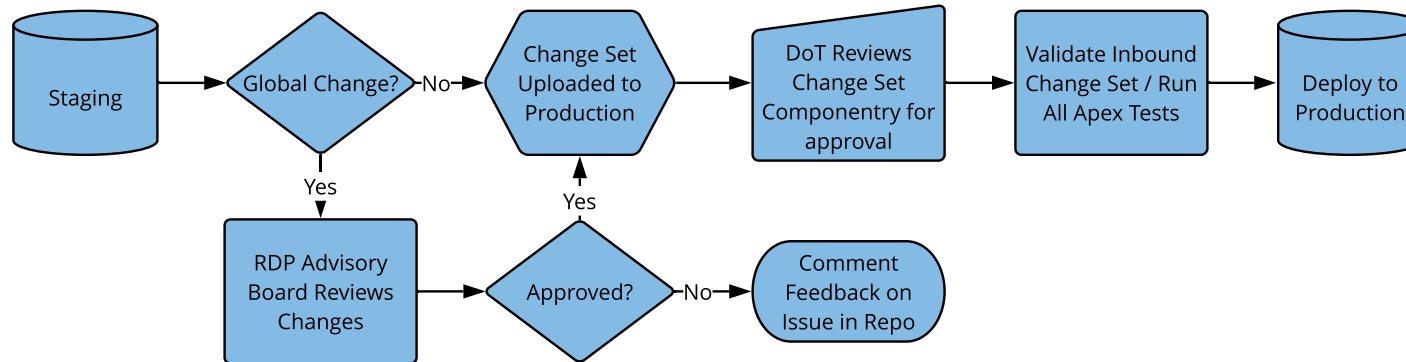
All code must attain 95% + Code Coverage and 100% Assertion passing

Staging will undergo refresh once monthly  
  
Developer Sandboxes will undergo refresh upon request

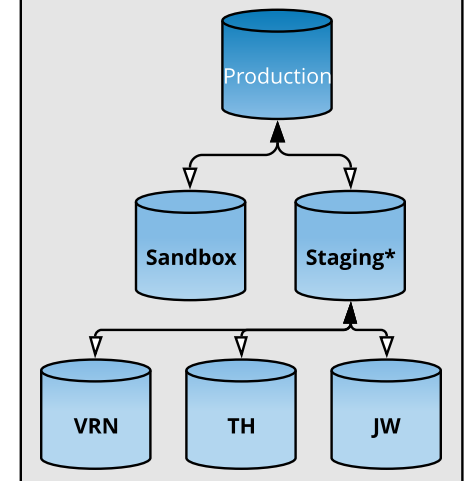
### Developer Sandbox to Staging



### Staging Sandbox to Production



### Instance Relationship Map



### Version Control

